

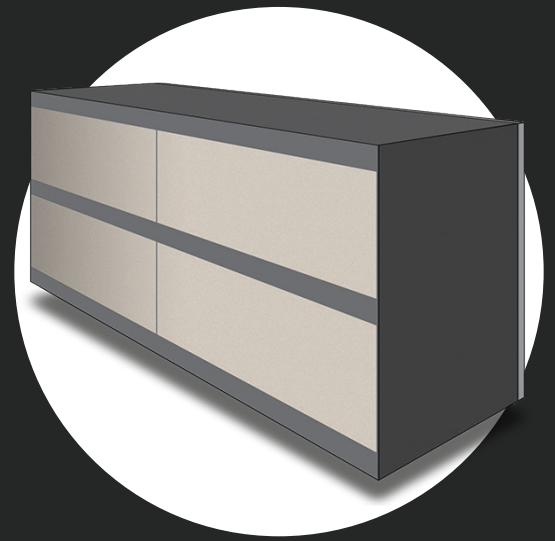
Reinforced **ACE**armour™ 112mm

Benchmark Performance Zirconia Toughened Alumina

Reinforced **ACE**armour™ 112mm and 63mm are a new generation liner that incorporates the additional layers of abrasion resistant bar. The ceramic liners are engineered to fit the area.

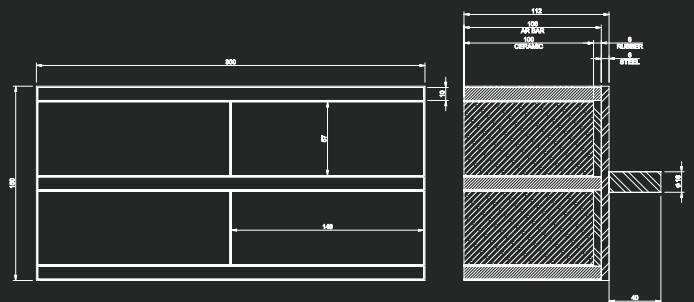
Reinforced **ACE**armour™ wear liners have been designed to offer increased resistance to both impact and abrasion, specifically in harsh bulk materials handling applications.

Reinforced **ACE**armour™ ceramic wear liners are composed of Zirconia Toughened Alumina (ZTA) tiles.



BENEFITS

- Superior impact and abrasion resistance compared to standard alumina liners
- Smooth ceramic face enhances flow efficiency
- Low cost per tonne benefit



For Additional Information

Call ACE on +61 8 9303 9944 or email info@australce.com



**PROTECTING ASSETS
ENHANCING EFFICIENCY**

Australian Ceramics Engineering Pty Ltd. | ABN 89 153 041 975
67 Excellence Drive, Wangara WA 6065 | +61 8 9303 9944
info@australce.com | www.australce.com