



Capability Statement

About ACE...

"Inspired to make things last"

Australian Ceramics Engineering Pty Ltd (ACE) specialises in the supply of components and services used to overcome the issue of excessive wear experienced in mining and other bulk handling applications. ACE partners with its clients, offering market-leading products and services which include a proven range of highly wear-resistant ceramic, metallic and epoxy solutions.

As a result of working closely with its valued clients, and researching the world for innovations, ACE has developed a solid reputation as a market leader in wear technology. ACE is regarded by many major organisations as a leading supplier of high quality wear-resistant solutions and related support services, within Australia.

With ISO 9001, ISO 14001 and ISO 45001 certifications, ACE ensures consistent processes in delivering quality products and services, safe working procedures and a better environmental footprint.



Why ACE?

"Dedicated to quality and innovation"

ACE remains at the forefront of wear technology and is regarded as an innovator in the introduction of leading abrasive wear and allied product technologies into the Australian mining and resources industry.

- We supply innovative solutions with products that exceed lead times
- We have extended the asset life, increased throughput and decreased downtime in countless applications for some of the largest mining companies in Australia
- We are committed to building partnerships - Your success is our success
- Onsite services with continuous improvement reporting
- Advanced technical and support services whenever and wherever required
- State of the art manufacturing facilities and equipment
- Expert employee representation for full product range
- Our future is in our reputation



Who Are ACE?

"Our team is our most valuable asset"

ACE is led by a dedicated management team, combining experience in engineering, fabrication and on-site maintenance. With an extensive level of experience in mining, the ACE team has a thorough understanding of the specific operational requirements and challenges faced across a range of mining commodities.

Paul Devine – Managing Director After spending many years in operational and executive management, Paul was appointed in 2020 as Managing Director of ACE. Since then has developed both the business' growth opportunities and M&A's. Paul has worked extensively in Australia and abroad and held many hands-on Managing Director roles in private companies including mining.

Keith Vuleta – Chief Financial Officer Keith has over 25 years experience in CFO and Company Secretary roles for public and private companies. Keith has significant commercial experience gained both domestically and internationally, primarily with companies operating in the resources sector.

Colin Turnbull – Chief Operations Officer Commencing his career as a qualified fitter/machinist and climbing the ranks, he now has over 30 years' of management experience in the mining servicing industry with exposure to both consumable and equipment manufacturing. Colin strives to set new benchmarks in service and quality, leading by example, and tapping into his teams knowledge and potential. He is highly respected and valued in the industry.



Desire Collier – Human Resources Manager With extensive experience in a range of industries including hospitality, health, mining and oil and gas, Desire has a proven record in supporting business successes. Joining ACE in 2022, Desire's focus thus far has been recruitment and employee relations. Desire is a dedicated and passionate leader, striving for diversity and inclusion in the workplace as well as fostering a culture of wellness and development support.

Shane Arnold – Business Development Manager With over 20 years' experience in the specialist contracting field, Shane has held various roles including Operations Manager and Marketing Manager in a wide range of industries throughout WA & NT. Since joining ACE in early 2018 as Technical Services Controller, Shane has overseen the estimating, tendering and drafting teams and brings this knowledge and experience to the BDM role to enhance ACE's industry presence and provide support for our clients operational requirements.

Products & Services

ACE offers a range of products and services centered on reducing the effect of wear on material handling operations.

CERAMIC WEAR LINERS

A range of ceramic wear products each with unique performance features, suited to a range of applications. This includes composite ceramic wear plates, direct bond Alumina ceramics, Silicon Carbide cast equipment and our range of rubber backed ceramics. In addition, ACE is able to supply cast Basalt, Alumina and Epoxy lined equipment and piping.



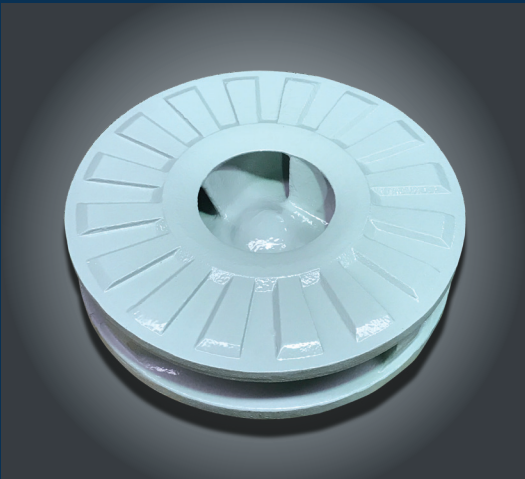
METALLIC WEAR LINERS

ACE supplies a complete suite of metallic wear products and services for the mining and quarrying Industry. ACE supplies standard Industry plate grades along with a range of cutting edge materials. These have been developed in conjunction with our manufacturing partner to provide superior abrasion and impact resistance in hard rock mining applications.



EPOXIES & COATINGS

The superior abrasion and corrosion resistance of ACE ceramic coatings and epoxies offer the benefit of extending the life of industrial components and structures. Extending the longevity of components reduces the frequency of rebuilds and maintenance downtime, improving production and uptime, and contributing to a greater operational cost benefit.



CRUSHER LINERS & PARTS

ACE supplies superior long-lasting wear products to the mining and aggregate industry including manganese crusher wear products and specialised components.

The ACE philosophy is to develop a partnership with our clients to embrace the total cost of ownership for mutual benefit.



ON & OFF-SITE SERVICES

With its dedication to partnering and providing an end-to-end wear management solution to its clients, ACE offers a range of support services to assist its clients in overcoming wear and impact issues.

ACE's support services include the design of wear solutions based on the company's extensive industry experience. For the vast portion of its clients, ACE also manufactures individual liner components in its dedicated fabrication operation in Perth.



ACE Culture

"How we do, what we do"

We empower our employees to grow and take ownership of ideas and projects, and are proud to have created a culture that embodies learning and professional development. Understanding our dynamics and strong culture is important as we know it can impact our clients. Our clients are important to us, and we want to find a common purpose and exceed expectations, everytime!

In addition to the emphasis we place on culture, we also strive for a diverse work environment, promoting a wider perspective on customer needs, product improvements and company well-being.

We proudly work with **Ebenezer**, an Aboriginal community controlled non-profit employment centre as well as **Edge**, employment solutions for people with disability.



Safety and Environment

"It is our duty to look after our employee's protection"

The well being of people and the environment is a value that is strongly supported by ACE. The company complies to its own thorough safety policy, ensuring safe practices are exhibited by all of its team members. ACE also extends its dedication to safety by readily adopting the OH&S guidelines set by its client organisations.

ACE is also active in reducing its impact on the environment. This is demonstrated by its dedication to waste reduction and the adherence of its clients' environmental policies.





With its dedication to quality, service and providing cost-effective solutions, ACE operates through the **STRIDE** value system. This is more than just a statement - it's a way of life, formulating how the company and its team members work together and with clients.



Safety - Teamwork - Results - Integrity - Dynamic - Environment



Australian Ceramics Engineering Pty Ltd | ABN 89 153 041 975
67 Excellence Drive, Perth, Western Australia 6065
(08) 9303 9944 | www.australce.com | info@australce.com